



Northport

Port Information Manual

Cruise Ships



Document Revision History

Revision Number	Revision Date	Reviewed By	Revision Type	Pages Reviewed
1	January 2019	Bruce Goodchild	New Document	
<u>2</u>	<u>November 2023</u>	<u>Bruce Goodchild</u>	<u>Revision 1.1</u>	
<u>3</u>	<u>December 2023</u>	<u>Bruce Goodchild and NTL</u>	<u>Revision 1.2</u>	<u>All</u>
<u>4</u>	<u>December 2023</u>	<u>Jae Staite</u>	<u>Revision 1.3</u>	<u>Facility and security details</u>
<u>5</u>	<u>February 2025</u>	<u>Jae Staite</u>	<u>Revision 1.4</u>	<u>Marine updates</u>

DOCUMENT LOCATION:

K:\Marine Operations\Cruise\Cruise Ship Port Information Manual Rev 1

Distribution List

Number	Recipient	Date
1	Master Record	

Contents

Contact Information – Northport Limited	4
Website Cruise Schedule and General Information	4
Location Map	5
General Port Information	6
Local Port Service: Call Whangarei Harbour Radio Call Sign ZMH56	6
Pilotage	6
Port Limits and LPS Service Area	7
Environmental Conditions and Port Approaches	8
Tides, Tidal Streams and Prevailing Winds	8
Approach Routes and Navigational Dangers	8
Anchorage	8
Tender Operations	8
Restrictions	9
Pilot Boarding Times and Pilot Ladder Arrangements	9
General Notices and Regulations	9
Notifications for Pilot Launches and Tugs	9
Tug and Pilot Boat Specifications	10
Passage Plan Valid for Northport	12
Berth Facilities	13
Cruise Ship Berths	13
Maximum Size and Berthing Order	13
Hours of Work	13
Port Development Plans	13
LNG Operations	13
Fenders and Bollards	14
Berth Drafts	14
Services Available	17
Cruise Ship Passenger and Visitor Requirements	17
Port and Berth Access	17
Port Security	19
Emergency Response	19

Contact Information – Northport Limited

Northport Limited 21 Ralph Trimmer Drive 0171 Marsden Point New Zealand	Northport Limited PO Box 44 0151 Ruakaka New Zealand
--	---

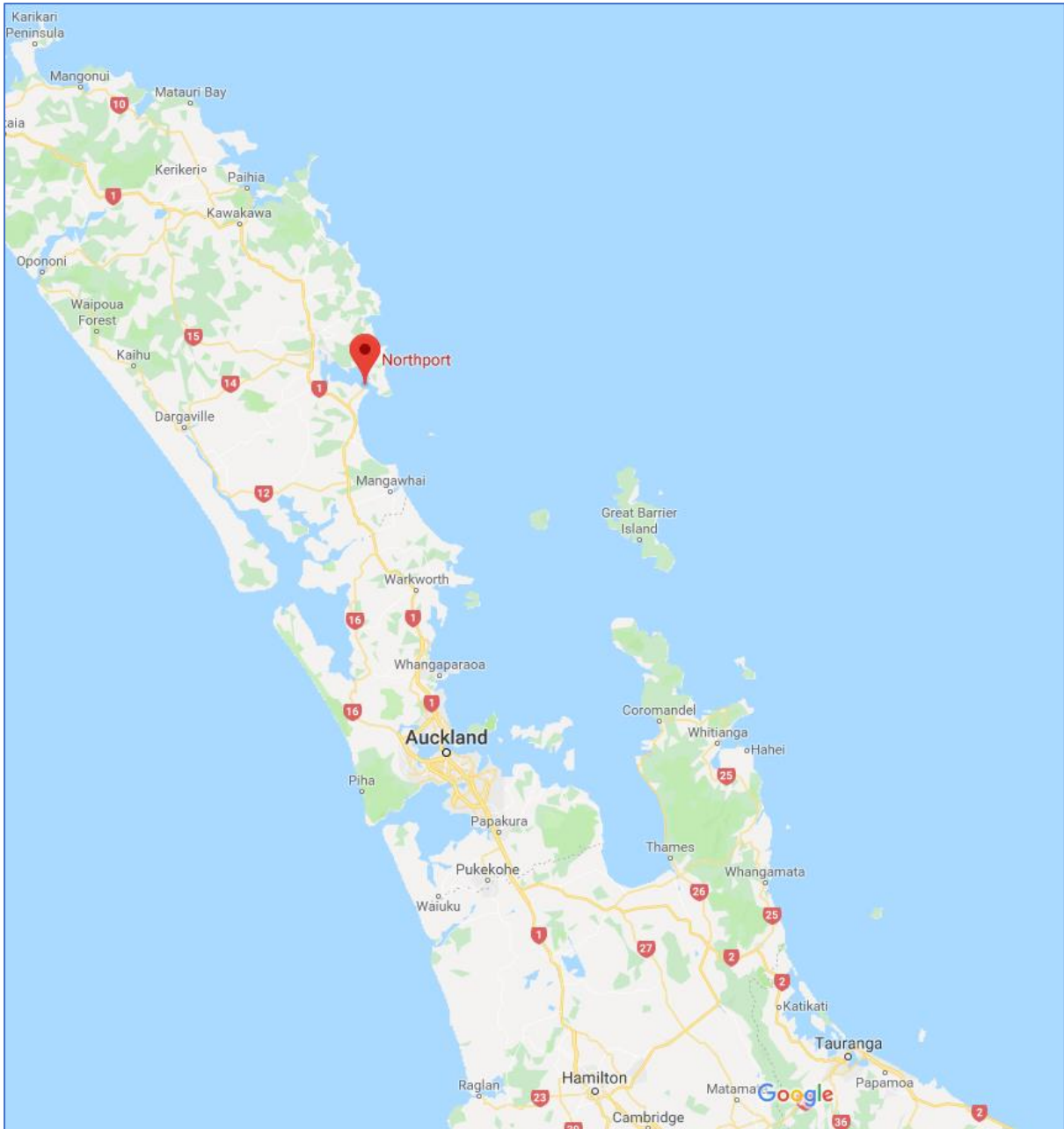
Essential Contacts	Name	Phone	Email
Local Port Service ZMH56	Port Services Centre Call Whangarei Harbour Radio Ch 11 VHF	(09) 432 5018	shipping@northport.co.nz
Harbourmaster	Jim Lyle Northland Regional Council	(09) 438 4639	jiml@nrc.govt.nz
Deputy Harbourmaster Commercial	Bruce Goodchild Northland Regional Council/Northport Ltd	021404539	bruce.goodchild@nrc.govt.nz
Cruise Terminal	Ken Andrews Cruise Manager	021362375	Cruise@northport.co.nz
Port Facility Security Officer	Jae Staite Northport Ltd Marine Operations Manager	(09) 432 5018 m 0275394962	jae.staite@northport.co.nz
Port Facility Security	Port Services Centre	(09) 432 5018	portservices@northport.co.nz

Website Cruise Schedule and General Information:

Berthing and shipping schedule is available on the Northport Ltd website: www.northport.co.nz

Northport Ltd is one of three commercial port operators located in Whangarei Harbour. The other operators are Channel Infrastructure at Marsden Point and Golden Bay Cement at Portland. The port of Whangarei is no longer a commercial port. The port authority for Whangarei Harbour is Northland Regional Council.

Location Map

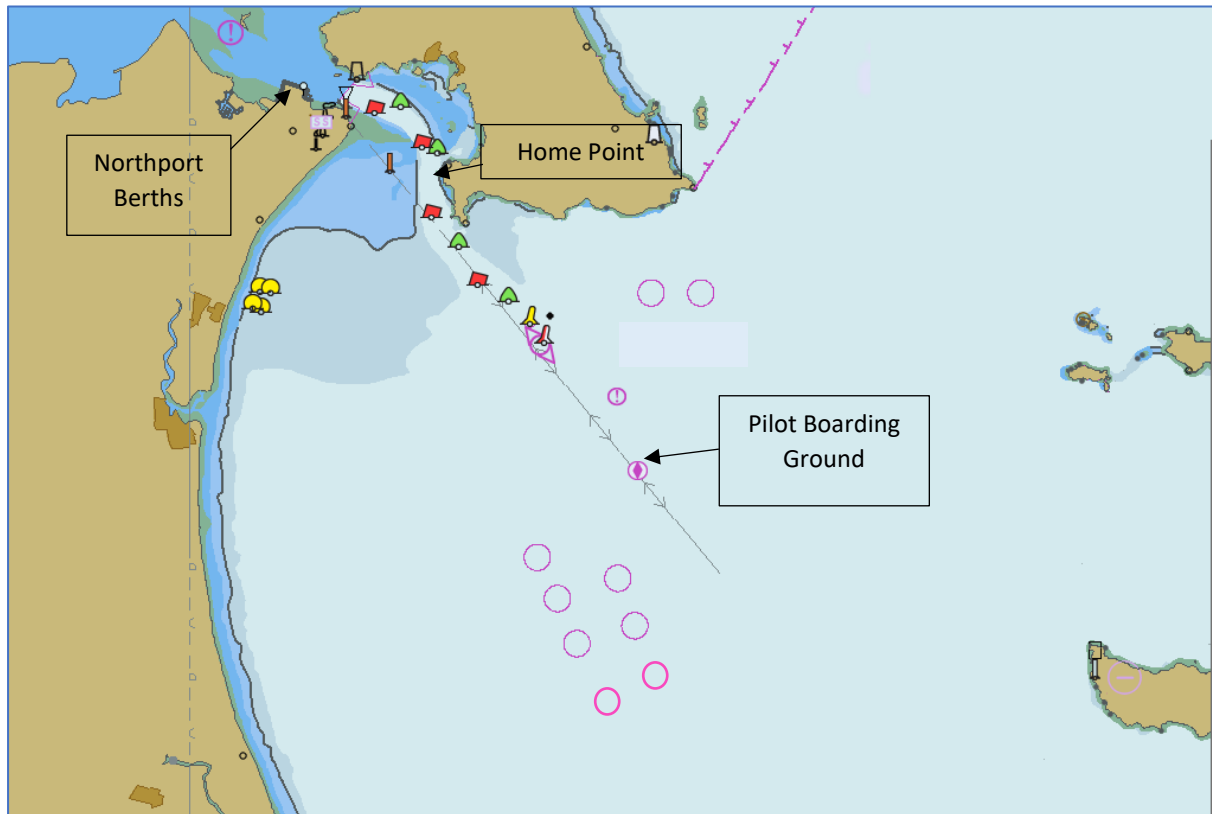


General Port Information

Northport: 35° 50.0'S 174° 30.0'E

Time Zone UTC + 12 hrs (UTC + 13hrs during daylight saving)

Charts: ENC NZ505214 NZ 521 and NZ 5214



Local Port Service: Call Whangarei Harbour Radio; Call Sign ZMH56

Operated by Northport Limited, manned by trained operators 24/7 as an information service, monitoring shipping movements. The Local Port Service is in the Port Services Centre at the Northport Facility and participating vessels must call Whangarei Harbour Radio operating on VHF Channels 11 and 16. VHF Channel 11 must be monitored whilst the ship is alongside the wharf for emergency response. The LPS is equipped with Radar and AIS and surveillance cameras that cover the berth areas. All SOLAS ships must participate in the Local Port Service. All enquiries regarding pilotage, towage, berthage, ordering of cranes, hoppers, gangways, water, storage, and cargo related activity must be made through the Port Services Centre (VHF Ch 11 or Tel: 09 432 5018).

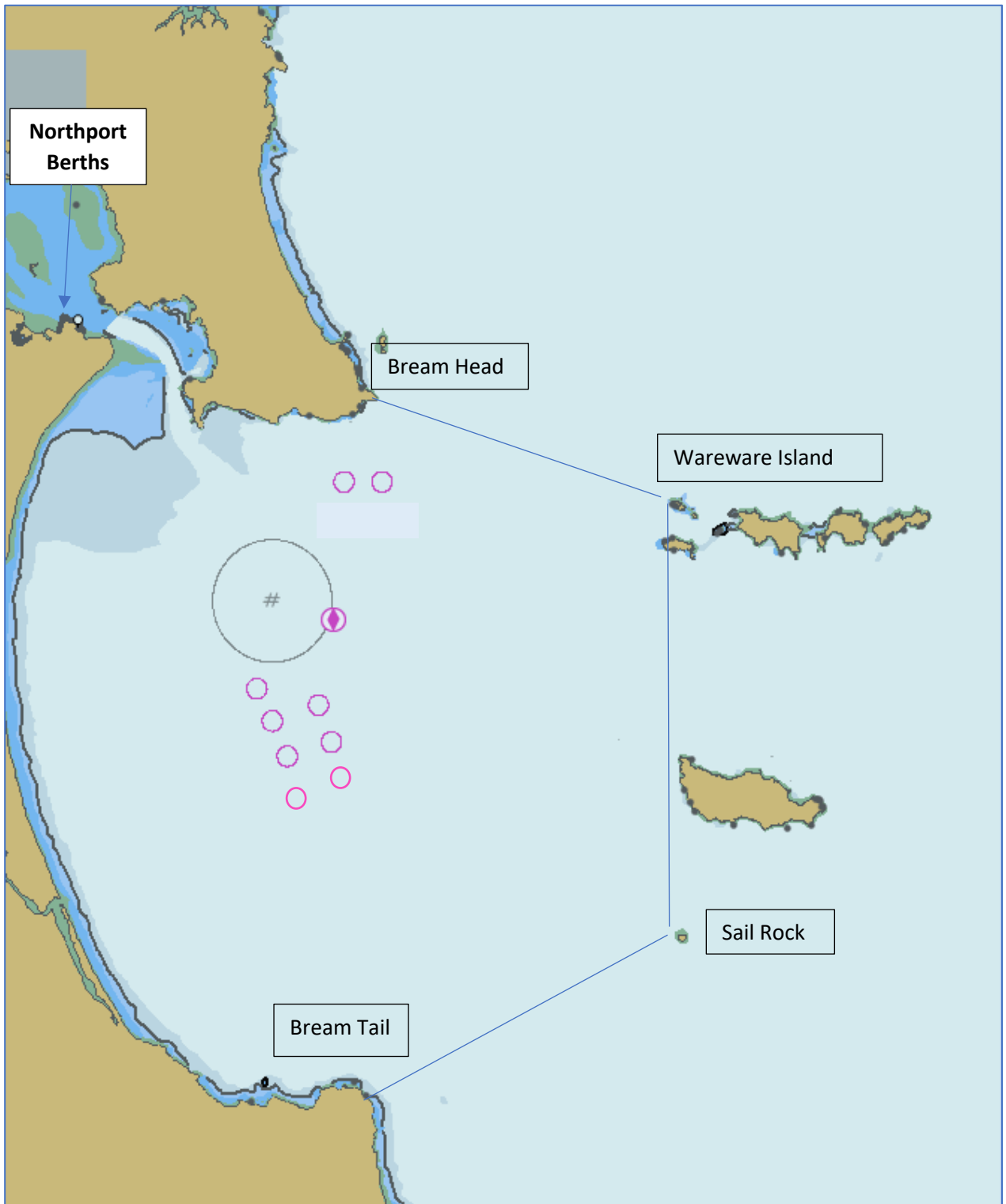
Pilotage

All vessels 500 GT or over require pilotage. Pilotage and tug services to Northport berths are arranged through Northport Limited.

The pilot boarding ground is approximately 2 miles southeast of the Fairway buoy and marked on ENC NZ505214 and charts NZ 5219, NZ5214 and NZ521 in position 35° 54.9'S, 174°, 34.6'E. The pilotage from the boarding ground to Northport Berths is seven nautical miles.

Port Limits and LPS Service Area

The LPS Service Area covers the ports of Whangarei Harbour including Whangarei, Portland, Marsden Point Refining NZ, and Northport. The service area extends out from Bream Head to the west of Wareware Island, South to Sail Rock and back to Bream Tail



Environmental Conditions and Port Approaches

Tides, Tidal Streams, and Prevailing Winds

Tidal range is between 2.2m at springs and 1.6m at neaps. Tidal streams are strongest reaching 3 knots at springs near Home Point and 2 knots off the Northport wharves. Prevailing winds are south westerly.

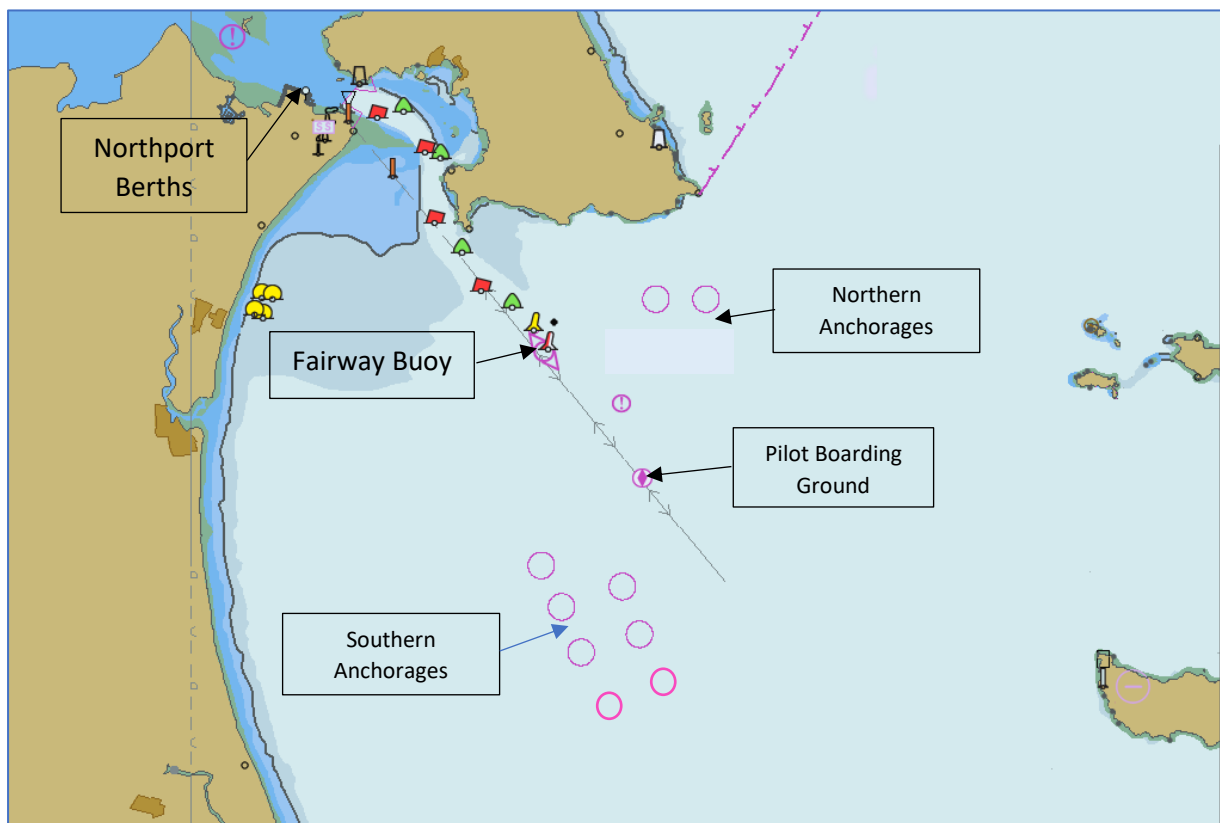
Approach Routes and Navigational Dangers

When approaching Whangarei Harbour from the north all vessels greater than 45m in length / 500 gross tonnes must avoid the mandatory restricted area marked on chart NZ521 and pass at least 5 nautical miles to the east of the Poor Knights Islands.

Anchorage

Nine designated anchorages (two quarantine) for Whangarei Harbour are in Bream Bay North and South of the pilot boarding ground, positions are marked on ENC NZ505214. Depths available are from 30-46m. The anchorages are exposed to easterly weather above 30 knots sustained wind speed. (See: Harbourmaster Guidelines Northport website [Harbourmaster Guidance, Whangarei Harbour | Northport](#))

Fair holding ground exists on a sandy bottom, the anchorages are surveyed annually for obstructions.



Tender Operations

No tender service is available.

Approach Channel: Depths and Width

The approach channel into Whangarei Harbour has a shallowest depth of 14.5m at chart datum (LAT) between the Fairway Buoy and No 1 buoy. Wave rider buoys are located to the north. The least width of 190m is between No 3 and No. 6 buoys. Tidal streams are strongest in the area off Home Point where rates of over 3 knots may be experienced.

For vessels proceeding to Northport berthing from 0-390m (Berth1 and 2), the controlling depth is 13.0m at chart datum and for berthing from 390-570m (Berth 3) it is 14.5m. Note: metre marks are measured from West to East. The turning basin has a maximum width of 400m and controlling depth of 12.5m.

Restrictions

Transits are available day and night. Vessels with drafts of less than 11.8m can berth and depart at any state of the tide utilizing Static Under Keel Clearance (UKC) set at 10% of draft. Dynamic UKC is available and required for all vessels. The area is a popular recreational boating area especially in summer months.

Pilot Boarding Times and Pilot Ladder Arrangements

Passage time from Pilot board ground to berth is normally 50 minutes. Pilot boarding time is 1hour 30mins prior to passenger disembarkation.

Berthing direction of the vessel is determined by the tidal flow, all vessel are berthed into the tide.

Boarding is in accordance with any tidal window and wind restrictions. Please see: Port Information and Operating Criteria for Shipping Operations at Northport. www.northport.co.nz/node/11084

Normally the ladder will be rigged on the lee side 1 m above the water. A heaving line must be available. Manropes will be required dependent on pilot instructions to the ship. Required boarding arrangements for Pilots must comply with normal SOLAS Regulations V/23 and IMO Resolution A.1045(27).

General Notices and Regulations

Regional Council Byelaws apply. Please see: Port Information and Operating Criteria for Shipping Operations at Northport. www.northport.co.nz/node/11084.

Harbourmaster Guidelines are found on the Northport website. [Harbourmaster Guidance, Whangarei Harbour | Northport](#)

Notifications for Pilot Launches and Tugs

Pilotage and Towage is provided through North Tugz Limited. Bookings for Northport Berths are made through the Local Port Service. Call 09 432 5018 or Whangarei Harbour Radio (LPS) VHF Ch 11:

Ships agents (and vessel where applicable) must notify Northport of a vessel's impending arrival via shipping@northport.co.nz as follows (these are minimums):


- 14 days in advance - Pre-arrival notification issued by email to NPL.
- 7 days in advance - Vessel Arrival Information (VAI) emailed to NPL.
- 7-1 days in advance - Continual updates of ETA and ETD issued.
- 48 hours in advance - Dangerous goods documentation issued.
- 24 hours in advance - Arrival vessel Movement Information (VMI) & pilot card issued.
- 6 hours in advance- VMI of departure emailed to NPL.
- 4 hours in advance - Ship makes first contact with Harbour Radio (WHR) VHF 11.
- 1 hour in advance - Ship communicates 1hr from Fairway buoy to WHR VHF 11.

The Cruise Ship must remain a minimum of 1.25nm from the Fairway Buoy at all times.

The pilot boards by pilot boat at the pilot boarding ground, the pilot boat will contact the ship prior to pilot embarkation.

Tugs will meet vessels at either No 4 or No 9 buoys depending on the vessel size. Vessels will berth into the tide.

Tug and Pilot Boat Specifications

Name	Type	Specifications
Berkley	Pilot Boat	Pilot launch maximum speed 28 knots, 18.5m long and beam 5.2m 
Bream Bay Damen 24/11	ASD	69 tonnes bollard pull, two-crew tug, 24 metres long and 11 metres beam, maximum speed of 12.8 knots. 
Takahiwai	ASD	51 tonnes bollard pull, two-crew tug, 22 metres long, 338 tonnes of displacement and maximum speed of 12 knots. 

Smaller towage capability is available on request. Please see: Port Information and Operating Criteria for Shipping Operations at Northport. www.northport.co.nz/node/11084

Pilots and Tugs operate on VHF Channel 11.

Marsden Point Passage Plan and Master Pilot Exchange (MPX) Information

The pilotage passage plan is a recommended route between the designated pilot boarding station and the berth. This plan is indicative and can be deviated from only at the discretion of the Master and/or Pilot. North Tugz accepts no liability arising from the reliance of this plan.

Pilot Boarding Station to/from Northport Berths

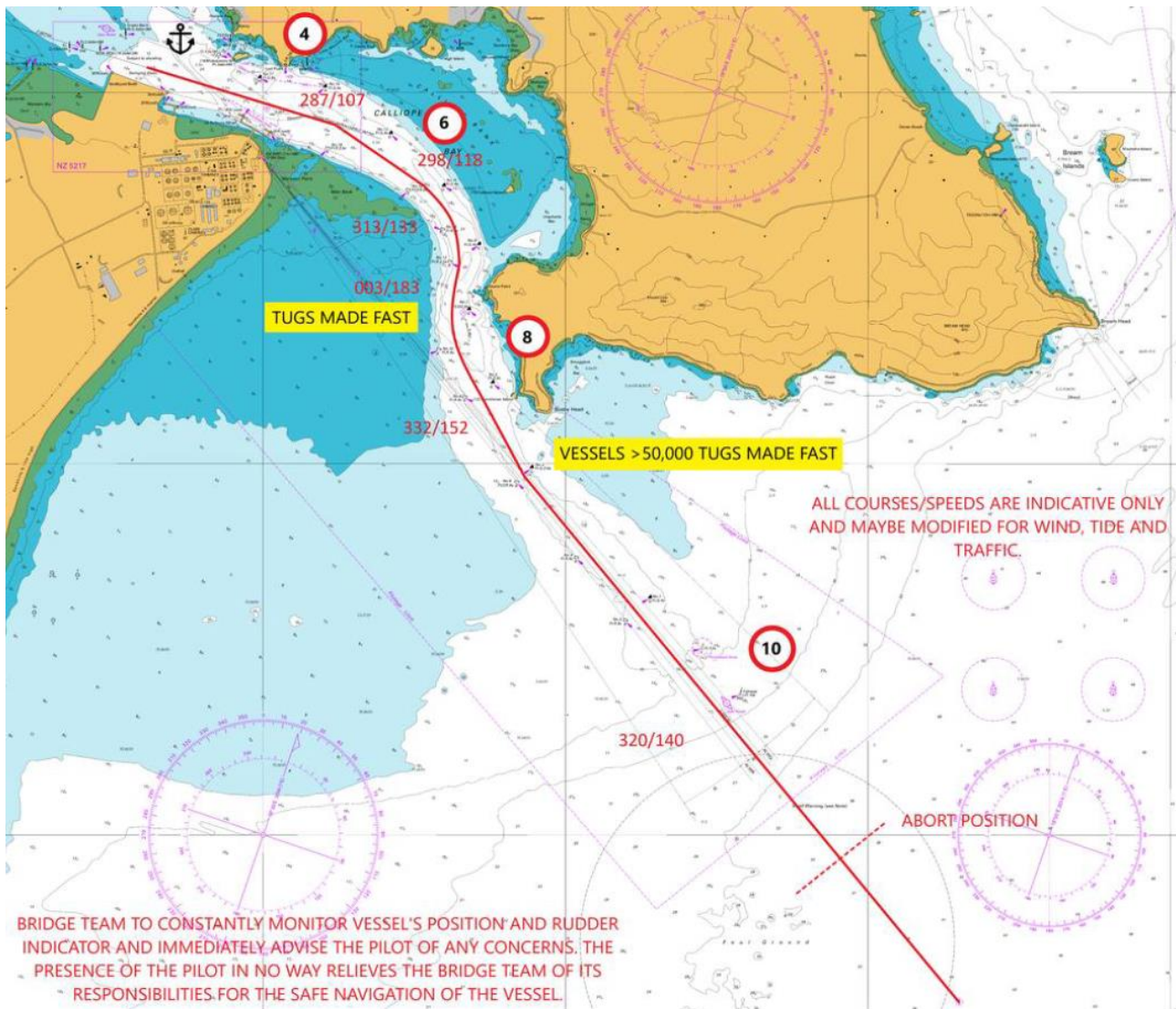
Name	Latitude (S)	Longitude (E)	Course	Distance (Nm)	Turning radius (Nm)
Pilot Boarding Station	35° 54.8985'	174° 34.6020'	320°/140°	3.67	
No.3 & 6 Buoys	35° 52.0623'	174° 31.7265'	332°/152°	0.78	
No.10 Buoy	35° 51.3739'	174° 31.2748'	003°/183°	0.65	0.50
No.14 Buoy	35° 50.7236'	174° 31.3179'	313°/133°	0.56	0.35
No.13 Buoy	35° 50.3273'	174° 30.8377'	298°/118°	0.31	0.50
No.18 Buoy	35° 50.1819'	174° 30.5016'	287°/107°	1.09	
Northport Berths	35° 49.8608'	174° 29.2163'	Total	7.06	

All courses/speeds are various to Masters orders and Pilots advice.

A digital copy of the planned MPX is issued to the vessel before pilot boarding. MPX includes:

- Planned pilotage timings,
- Confirmation of vessel condition,
- Risk assessment,
- Predicted conditions
- Weather Information
- Berthing conditions
- Passage plan, including berthing

Passage Plan Valid for Northport



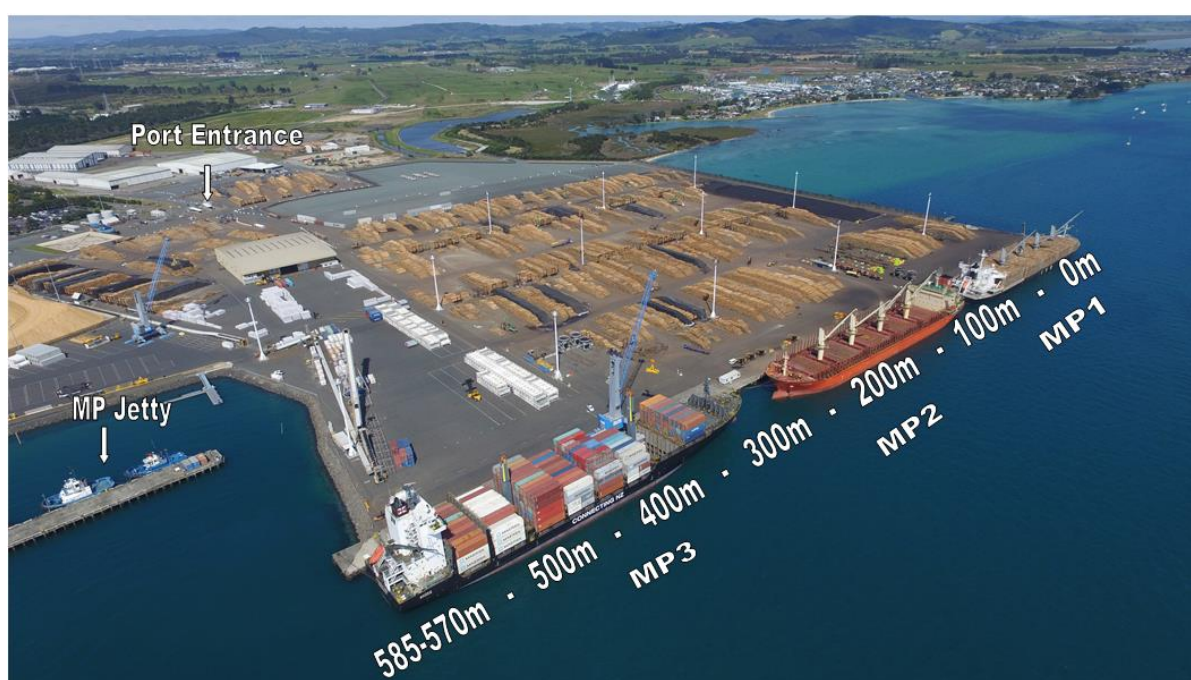
The latest Marsden Point Passage Plan is available at www.northport.co.nz/node/1603

Berth Facilities

Cruise Ship Berths

Northport is designed as a multi-purpose facility to accommodate a combination of vessel lengths. The total berth face is 570 linear metres PLUS an allowance for a 5m overhang at the western end and 15m overhang at the eastern end with a potential overhang up to 80m. Northport can handle in-transit calls by cruise ships, with MP3 being the primary berth allocated for cruise vessels. There is no dedicated terminal available. All cruise calls will have temporary security and facilities installed for the vessels visit.

There is wharf space available for operations of at least 30m width along the length of the ship, although more space may be available. Distance between wharf edge and first obstruction (Light Towers) is 69m. There are no potential obstructions for overhanging lifeboats.



Maximum Size and Berthing Order

To date the longest vessels to call was 294m LOA .

Pre-booked Cruise ships are given priority over other vessels by Northport Ltd.

Hours of Work

24 hours, seven days per week except for Christmas Day and New Year's Day.

Port Development Plans

The port has the necessary consents to extend the berth frontage to the east for a further 270m.

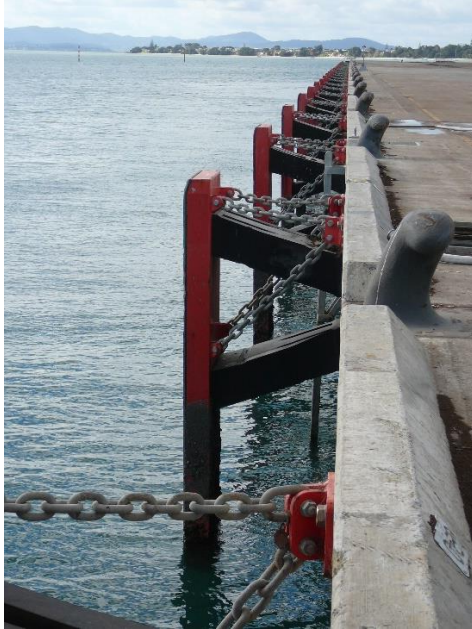
See Vision for Growth Video www.vision4growth.co.nz

LNG Operations

There are no LNG Operations in the port area.

Fenders

Fender Type	Trelleborg MV Element
Size	5.0 m x 1.45 m
Standoff Distance	1.70 m
Number	47
Distance between fenders	12.5 m



Bollards

Safe Working Load (SWL)	100 tonnes
Distance between bollards	12.5 m
Storm bollard SWL (back from wharf edge)	90 tonne each

Wharf Heights

<u>Height of wharf at</u>	<u>Meters</u>
LAT	5.00m
MLWS	4.50m
MHWS	2.30m
Tidal range MHWS to MLWS	2.20m
Wharf apron width	15.0m

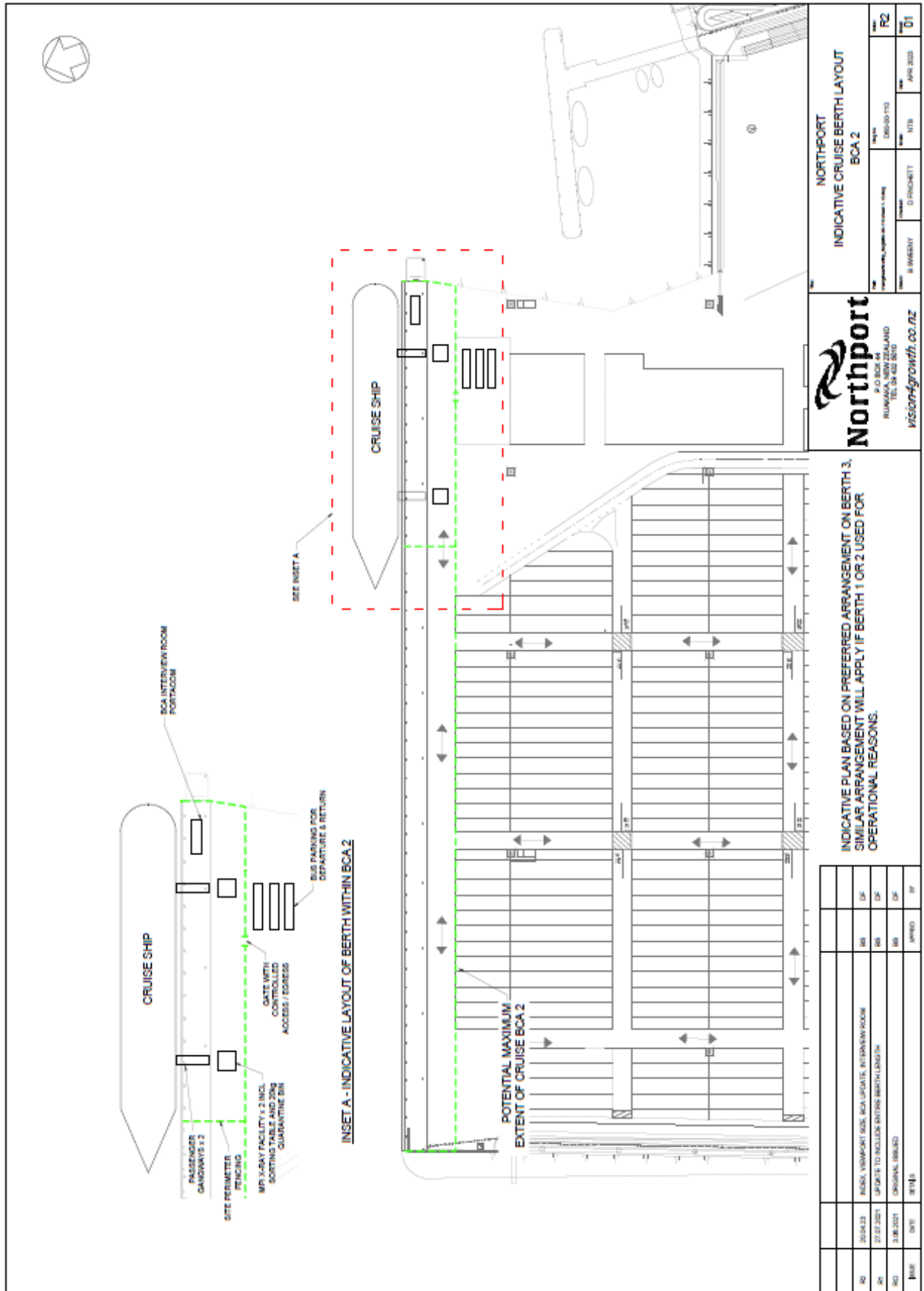
Berth Depths

<u>Berth</u>	<u>Meter Marks</u>	<u>Max Depth at CD</u>
MP1	0 - 195m	12.8m
MP2	195 - 390m	13.0m
MP3	390 - 570m	14.5m
Tug Jetty	0 – 135m	7.6m

Depth is maintained up to wharf structure.

Arrival and departures drafts are subject to a tidal calculation by DUKC.

Typical Berth Setup



Swell Criteria

Wave Ht H _{MAX}	Time Period				Av. Wave (Hs) Ht	Time Period			
	3s	6s	9s	12s		3s	6s	9s	12s
2.0	✓	✓	✓	✓	0.5	✓	✓	✓	✓
2.5	✓	✓	✓	✓	1.0	✓	✓	✓	✓
3.0	✓	✓	✓	✓	1.5	✓	✓	✓	✓
3.5	✓	✓	✓	✓	2.0	✓	✓	✓	✓
4.0	✗	✗	✓	✓	2.5	✓	✓	✓	✓
4.5	✗	✗	✗	✓	3.0	✗	✗	✗	✓
5.0	✗	✗	✗	✗	3.5	✗	✗	✗	✗

Services Available

The Port has a full range of services available. All requests should be made via the Ships Agent.

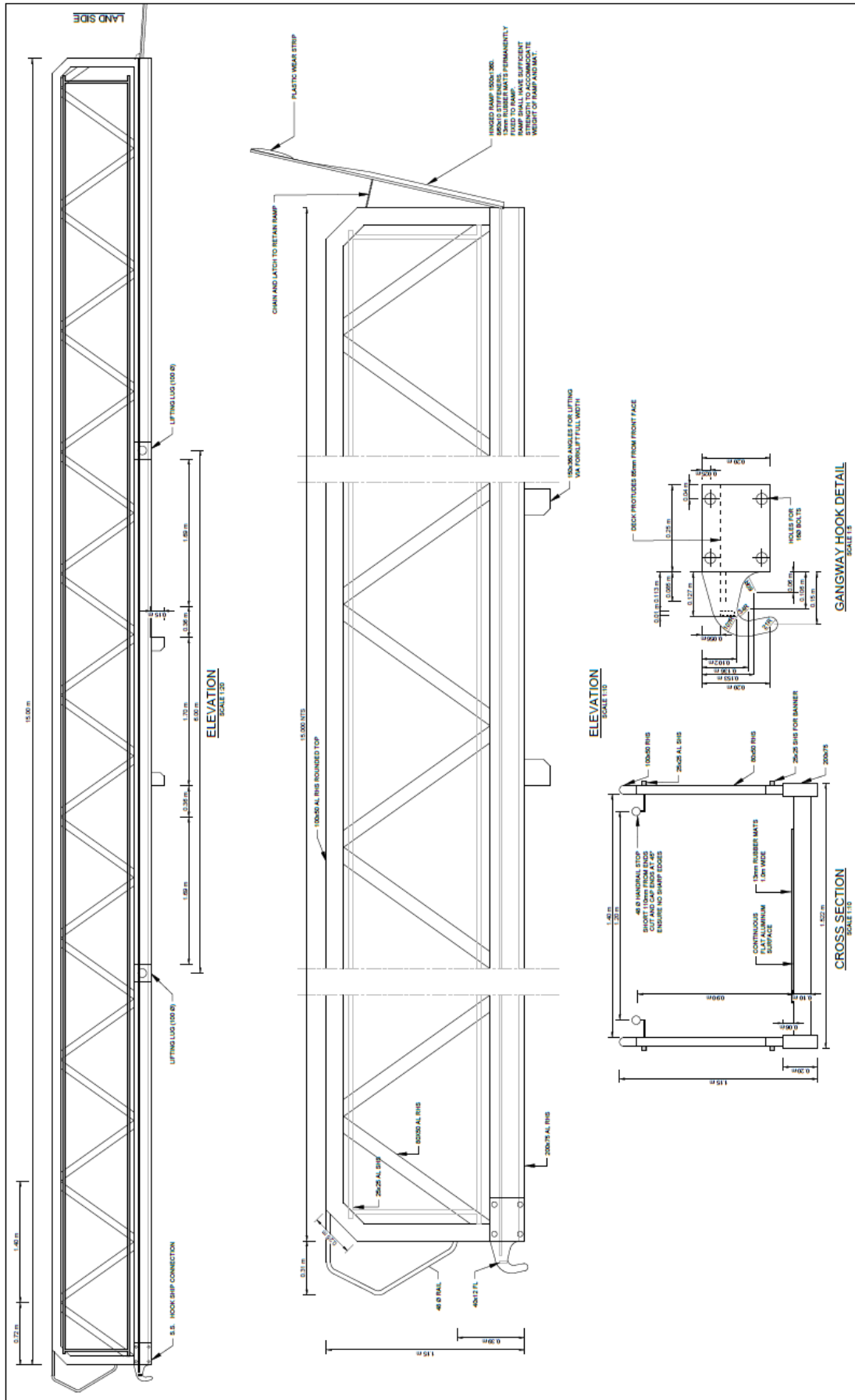
- Potable freshwater is available at a pumping rate of 20m³/ hr.
- Bunkers can be taken at Northport via road tanker (light fuels) or bunker barge Awanuia (heavy bunker fuels). MGO and HFO.
- Garbage (quarantine and domestic) and Oil/Sludge disposal.
- Provisions can be made whilst alongside but must be pre-notified to the Port.
- Lifeboat drills, engine immobilisations and hot works are permitted but must be authorised by the Port.
- Shore Power is not available.
- Mission to Seafarers on port, access via crew shuttle.

Cruise Ship Passenger and Visitor Requirements

Port and Berth Access

- Northport has 1 dedicated 15m cruise gangway, this gangway provides wheelchair access. There are 3 additional gangways for provisions or crew transfers only, 1 x 6m and 2 x 4m are available.
- Tender operations are not available at Marsden Point.
- Northport is a pedestrian free site; all crew and passengers must be transported via coach or van through the port.
- The ship or Destination Management Company arranges all transportation as required.
- Information for passengers (tours etc) is available via the Destination Management Company.
- Transportation can be organized by the port on request via the Ships Agent.
- Only permitted vehicles are allowed in the facility; this includes Shuttle buses and agent cars.
- Whangarei Airport is located 42 km by road from the Northport facility.
- All visitors must report to the Security Gatehouse and have completed the online Northport induction. Please see: www.northport.co.nz
- Banks are available in the nearby city of Whangarei 36 km from the Northport Facility. ATM (cash machine) services are available in Ruakaka 9 kms or Marsden Cove 1 km from the Northport Facility.

Northport Shore Gangway



PROPOSED GANGWAY PLAN VIEW, CROSS SECTION AND DETAILS
CRUISE BOAT GANGWAY

Northport
P.O. BOX 44
RANGIOTEA, NEW ZEALAND
TEL: 05 452 5510
vision4growth.co.nz

Client: T RYAN
Contractor: B SWEENEY
Date: JULY 2023
Sheet: R0
Scale: 01

NOTE:
1. ALL MATERIALS ALUMINUM OR STAINLESS STEEL UNLESS OTHERWISE STATED.
2. DESIGN LOADING OF 40kPa.
3. TO INCLUDE PSI.
4. DESIGN IS FOR INFORMATION ONLY.

ISSUE	DATE	DETAILS	APPROD	BY

Scale bars:
 ELEVATION SCALE 1:10
 CROSS SECTION SCALE 1:10
 GANGWAY HOOK DETAIL SCALE 1:5

Port Security

Northport provides ISPS compliant maritime security for the port facility, operating against the Maritime New Zealand Security Act 2004. The port security team are operational 24 hours 365 days a year.

Port Security controls all port access and on port security via CCTV, real time gate identification systems and patrols. Canine services are available through NZ Customs.

Port access is available 24 hours to all approved visitors and contractors, minimum health and safety standards apply. All ship visitors or contractors entering the port are required to be pre-advised by vessel or Ships Agent and require a minimum of a government issued photo identification. Cruise passengers require government issued photo identification and their cruise passenger ID card to be admitted to vessel.

The ISPS area is completely fenced and starts 50 m from the berths. Responsibility for provision of security screening shipside is at the responsibility of the Cruise company.

Northport operates at Port Facility Security Level 1 unless otherwise stated.

Northport will consult directly with the vessels Ship Security Officer throughout their visit.

Emergency Response

Emergency Coordination is available through the Port Services Centre. Call 09 432 5018 or Whangarei Harbour Radio (LPS) VHF Ch 11:

- Police are available through the nearby township of Ruakaka.
- Medical facilities including doctors at Ruakaka and a hospital at Whangarei are available.
- Fire and Ambulance are available locally at Ruakaka and Whangarei.